

PHOTO LONDON

14-17 MAY
2026

PREVIEW DAY 13 MAY

Discovery
(National Hall, Gallery)
Booth J7 - J8



CLAUDIA BEHRENSEN

Photography
@claudiabehrensen



BEYOND GARDEN

In Beyond garden, the women in my images create their own artificial shelter. In this series, I explore once again the relationship between humanity and nature, bond that fades in a world where abusive intervention of man, has led the environment to increasingly critical situation.

In this context, through a performative gesture, the “garden women’, appear, surrounded by artificial flowers, representations and masks.

The dreamlike image, confronts us with an unsettling reality: what would happen if nature disappeared? What would happen if gardens ceased to exist?

In Beyond Garden, the “garden women’, glimpse this possibility and fight against it, in an attempt to recover the lost paradise.

AC LATIN ART GALLERY

CLAUDIA BEHRENSEN

Photography
@claudiabehrensen



PHOTOGRAPHY
49CM X 59CM
PRINT FINE ART
DIGITAL PHOTOGRAPHY,DIRECT
SHOTHAHNEMUHLE PHOTORAG
PAPER YEAR 2026
£1300

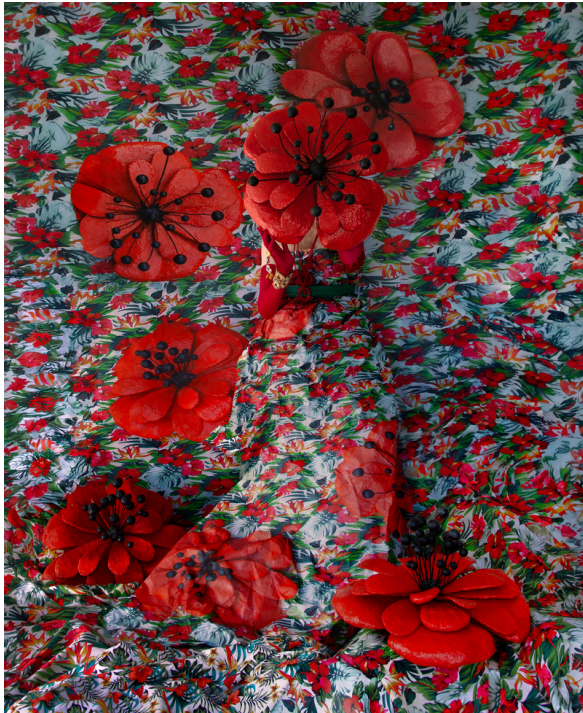


PHOTOGRAPHY 49CM X 59CM
DIITAL PHOTOGRAPHY,DIRECTSHOT.
PRINT FIEN ART
HAHNEMUHLE PHOTORAG PAPER
YEAR:2026
£1300

AC LATIN ART GALLERY

CLAUDIA BEHRENSEN

Photography
@claudiabehrensen



PHOTOGRAPHY
49CM X 59CM
PRINT FINE ART
DIGITAL PHOTOGRAPHY ,DIRECT
SHOT
HAHNEMUHLE PHOTORAG PAPER
YEAR:2026
£1300



PHOTOGRAPHY
49CM X 59CM
PRINT FINE ART
DIGITAL PHOTOGRAPHY ,DIRECT
SHOT
HAHNEMUHLE PHOTORAG PAPER
YEAR:2026
£1300



CLAUDIA BEHRENSEN



LATIN ART
Buenos Aires - Argentina

MARIA BAYÁ

Hand embroidery Photography
@mariabaya_handmade



A black and white eucalyptus in bloom appears as a space of memory and suspension.

Over it, warm coloured oval forms emerge as presences that are both foreign and responsive to the environment.

These elements interrupt without violence, activating a dialogue—a bridge—between the organic and the artificial, between what fades and what endures, between nature and abstraction.

The dialogue between the photograph and the hand that embroidered it is also a dialogue between two temporalities: the immediacy of the digital era and the slow passage of this ancestral technique. Through this process, the development and creative unfolding of each work transform it into a unique and unrepeatable piece.

MARIA BAYÁ

Hand embroidery Photography
@mariabaya_handmade



“BUBBLES & DIETES”
HAND EMBROIDERY ON OWN
PHOTOGRAPH
55 X 41 CM / 21,6 X 16,1
INCHES
2026 UNIQUE WORK
£1800



“AUTUMN LOOP”
HAND EMBROIDERY ON OWN
PHOTOGRAPH
55 X 41 CM / 21,6 X 16,1
INCHES
2026 UNIQUE WORK
£1800



“IN THE FOREST”
HAND EMBROIDERY ON OWN
PHOTOGRAPH
55 X 41 CM / 21,6 X 16,1
INCHES
2026 UNIQUE WORK
£1800



MARIA BAYÁ



LATIN ART
Buenos Aires - Argentina

CLAUDIA LEONELLI

Photography
@clauleonelli



TERRITORY IN TRANSFORMATION

This body of work engages the Argentine Atlantic coastline as a dynamic system in constant flux—an environment shaped by cyclical erosion, displacement, and renewal. Revisited over time, this territory reveals its inherent instability through the gradual yet persistent reconfiguration of its own geography.

What appears as form today may dissolve tomorrow. Each image registers a transient state: a momentary suspension within an ongoing process, a fragile pause in a landscape that resists permanence.

The work situates itself within a tension between beauty and vulnerability, between apparent stability and inevitable transformation. These photographs operate as traces of an unstable equilibrium—fragments of a terrain continuously shifting, even as it is being observed.

CLAUDIA LEONELLI

Photography
@clauleonelli



PHOTOGRAPH

DIRECT PRINT GLICE FINE ART, HAHNEMÜHLE PHOTO RAG 308 GSM

SERIES 1/5 + AP

100CM X 65CM

PRICE £2000



CLAUDIA LEONELLI



LATIN ART
Buenos Aires - Argentina

IRENE MOMESSO

Photography
@iromomesso



I work with silence as a material in transformation.

I do not conceive it as absence, but as a sensitive presence that occupies space, becomes tense, and shifts.

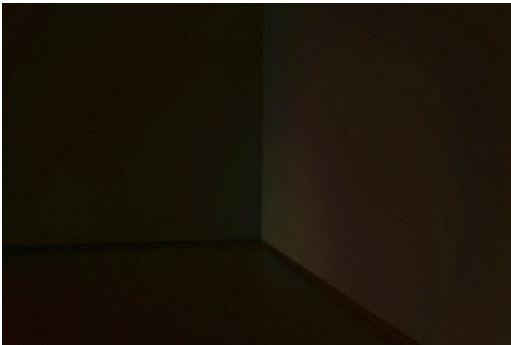
I am interested in what happens at thresholds: states of transition, the fragile, the unstable, what barely holds itself before disappearing. In these minimal moments, silence leaves a trace.

Through suspended volumes, precarious structures, and an atmosphere of penumbra, I seek for the image to become a place of listening. Light does not fully reveal: it brushes, suggests, allows matter to remain in suspension.

The metamorphosis of silence inhabits the space between the visible and the invisible. It proposes a slow contemplation, an experience in which time dilates and the gaze becomes attentive. Silence is neither background nor pause: it is process, subtle movement, a form of presence that transforms as it is being observed.

IRENE MOMESSO

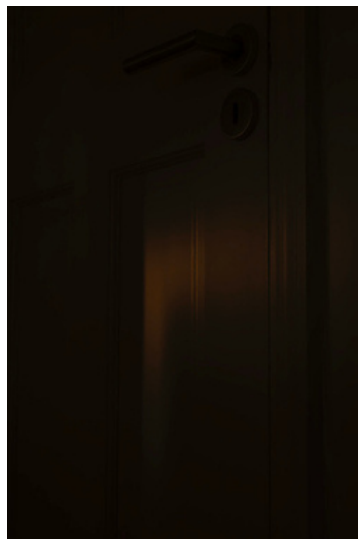
Photography
@iromomesso



FINE ART GICLÉE PRINT
TRUE RAG ETCHING MATTE 310GR
60 X 40 CM
23,6 X 15,7 IN
EDITION 1/7 + AP
YEAR 2025
£980



FINE ART GICLÉE PRINT
TRUE RAG ETCHING MATTE 310GR
60 X 40 CM
23,6 X 15,7 IN
EDITION 1/7 + AP
YEAR 2020
£980



FINE ART GICLÉE PRINT
TRUE RAG ETCHING MATTE 310GR
60 X 40 CM
23,6 X 15,7 IN
EDITION 1/7 + AP
YEAR 2020
£980



IRENE MOMESSO



LATIN ART
Buenos Aires - Argentina

LAURA LLAMOSAS

Photography
@laullamosas_photo



VENUS, the illogic of nature

Venus examines carnivorous plants through a controlled act of displacement. Removed from their natural habitat and photographed in the studio, these organisms are extracted from ecological narrative and repositioned as autonomous presences. Isolated against neutral space, form, colour and structure become primary. The plants no longer function as botanical specimens but as constructed images—self-contained, precise, and visually assertive. The work considers seduction as a structural principle rather than a metaphor. Attraction operates as survival strategy; aesthetics function as mechanism. By suspending the plants between nature and artifice, Venus proposes a subtle inversion of expected hierarchies: vulnerability appears as agency, stillness as tension, beauty as operative force.

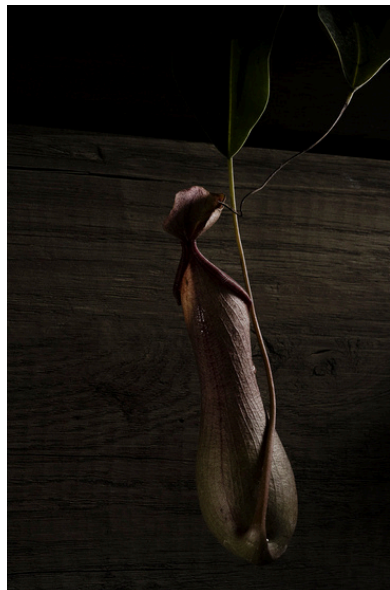
AC LATIN ART GALLERY

LAURA LLAMOSAS

Photography
@laullamosas_photo



Digital photography,
20x27 inch
(50x70 cm) in camera
image, Fine art print,
2025
£1300



Digital photography,
20x27 inch
(50x70 cm) in camera
image, Fine art print,
2025
£1300



Digital photography,
20x27 inch
(50x70 cm) in camera
image,
Fine art print, 2025
£1300



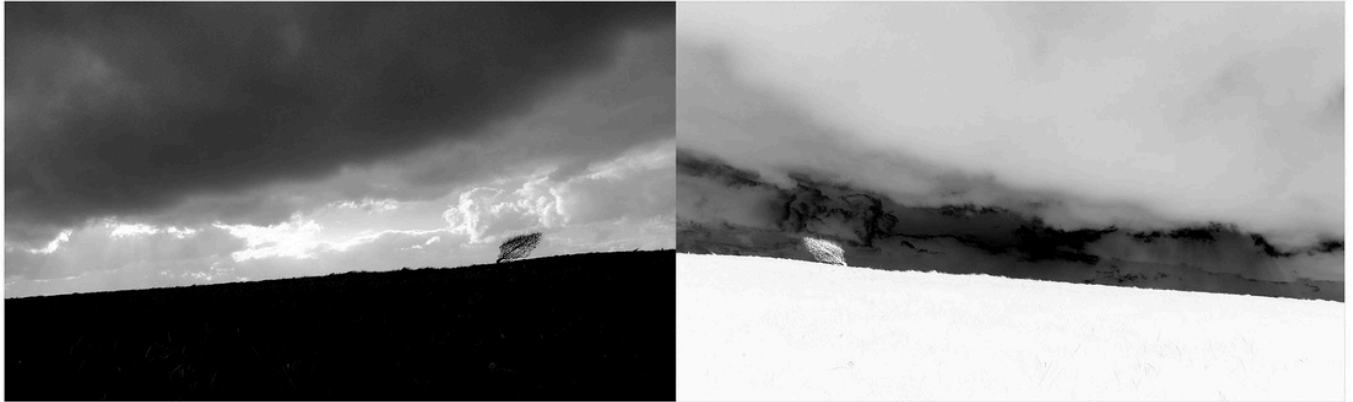
LAURA LLAMOSAS



LATIN ART
Buenos Aires - Argentina

MASAKO KANO

Photography
@kano_masako



Where the Memories Are Not Biometric

This work examines forms of memory that resist quantification. In a culture increasingly structured by biometric data, algorithmic prediction and artificial intelligence, I question whether lived memory – sensory, embodied and relational – can ever be replicated or translated into code. When the eyes close in meditation, images surface prior to language: fleeting movement, unstable form. Between holding and dissolving, form appears only to disappear.

Nature and objects operate here as mnemonic agents. Light reverses into negative; moving forms pass like neural impulses. At the centre are my Japanese diasporic roots across the generations over time: my mother, living with Alzheimer's disease, who once taught me the disciplined precision of the tea ceremony, not exists but in my memory...it explores ma – the space between form and void – where meaning is not held, but suspended.

MASAKO KANO

Photography
@kano_masako



“Spirit of Moments”
2019. .
40cmx30cm/15.71”x11.8”
Digital Photography
Canson platine Fiber Rag
310mg
3/5 + 2AP.
£ 600



“Internal Exposure”
(Series ‘Silent Radiance “
2018. .
40x40cm /15.75”x 15.75”
Digital Photography.
Canson Platine Fiber Rag
310mg 3/5 + 2AP
£500



“Memory of Teahouse IV”
(Series “Memory of
Teahouse”)
40cmx54
cm/15.71”x21.26”
Digital Photography
Canson platine Fiber Rag
310mg 1/5 + 2AP.
£ 700



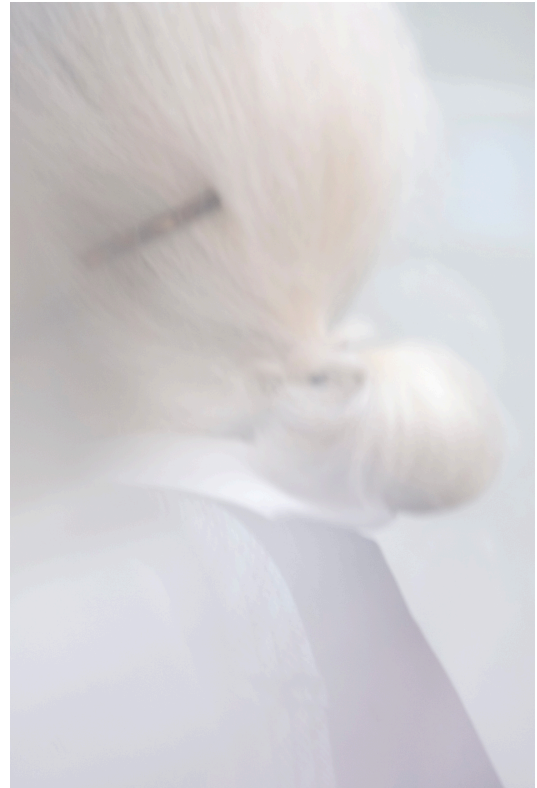
MASAKO KANO



LATIN ART
Buenos Aires - Argentina

NINA WELCH-KLING

Photography
@ninakling



“Rallentando”

With my camera, I silence the noise of New York’s bustling streets, transforming pedestrians passing by into musical notes within the symphony of everyday life - rallentando, a gradual slowing of tempo. Subjects drift in and out of focus, a downward gaze, a hand carrying a cake, a lock of curly hair, fleeting yet intimate glimpses of everyday life. Rallentando explores visual recollections and peripheral perceptions of serendipitous street encounters.

I reassemble these fragments, captured at varying stages of clarity, to reveal the city street as a systematic collection of momentary impressions. What is ordinary and incidental, often ignored, is transformed into the extraordinary. Background colors shape the subject, while intentional blur dissolves context, creating a dreamlike state in which meaning drifts from the central figure into the surrounding field of color.

AC LATIN ART GALLERY

NINA WELCH-KLING

Photography
@ninakling



Archival Print
Hahnenmühle Fine Art Paper
27 x 40 cm
10.5 x 16 inches
Limited Edition 1/10 + 2 AP
2023

£1250

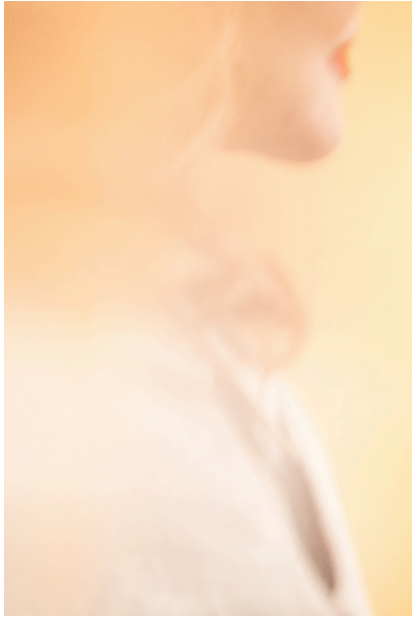


Archival Print
Hahnenmühle Fine Art Paper
27 x 40 cm
10.5 x 16 inches
Limited Edition 1/10 + 2 AP
2021

£1250

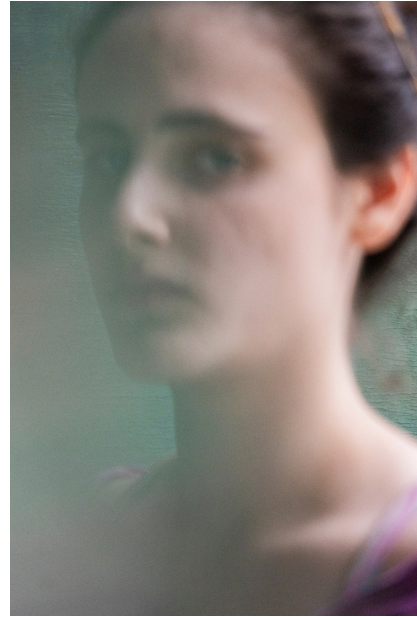
NINA WELCH-KLING

Photography
@ninakling



Archival Print
Hahnenmühle Fine Art Paper
27 x 40 cm
10.5 x 16 inches
Limited Edition 1/10 + 2 AP
2021

£1250



Archival Print
Hahnenmühle Fine Art
Paper
27 x 40 cm
10.5 x 16 inches
Limited Edition 1/10 + 2 AP
2022

£1250



NINA WELCH KLING

Courtesy by



LATIN ART
Buenos Aires - Argentina

SEBASTIAN MIGNOLA

Photography
@sebastianmignola



Forest of Solitudes Serie reveals how solitude emerges as an inevitable presence within urban life in New York City.

Between streets and parks, movement continues, yet something softens. The human figure appears reduced, fragile, defined by its relationship to light, weather, and architecture.

Within this context, displacement manifests as a persistent distance in the way the city is inhabited and experienced.

Color is fundamental in this series, as it shapes the work's identity and visual character.

AC LATIN ART GALLERY

SEBASTIAN MIGNOLA

Photography
@sebastianmignola



Fine Art Photography
Forest of Solitudes Serie
Title of artwork: SUSPENDED
LIGHT
Size: 55cmx37cm - 22 x 15 inches
Technique: Archival pigment
print on Hahnemühle Photo Rag
Baryta Paper 2025

£1400

Fine Art Photography
Forest of Solitudes Serie
Title of artwork: RED EMPTY
Size: 55cmx37cm 22 x 15
inches
Technique: Archival pigment
print on Hahnemühle Photo
Rag Baryta Paper 2025

£1400



AC LATIN ART GALLERY

SEBASTIAN MIGNOLA

Photography
@sebastianmignola



Fine Art Photography
Forest of Solitudes Serie
Title of artwork: Silent Witness
Size: 45cmx26cm -
22 x 15 inches
Technique: Archival pigment
print on Hahnemühle Photo Rag
Baryta Paper 2025

£1400



SEBASTIAN MIGNOLA



LATIN ART
Buenos Aires - Argentina

FER ZANNOL

Photography
@ferzannol_ph



Bizarre Times

This work, conceived in the context of the 2020 lockdown, is a profound reflection of the strangeness and paradoxes that defined that singular moment in human history. At a time when the world came to a halt, we found ourselves immersed in a sea of contradictory emotions: isolation became our new reality, and social distancing an imperative that blurred the boundaries of our human interactions. Loneliness, often feared, transformed into a constant companion, while fatigue—both physical and emotional—settled into our daily routines.

FER ZANNOL

Photography
@ferzannol_ph

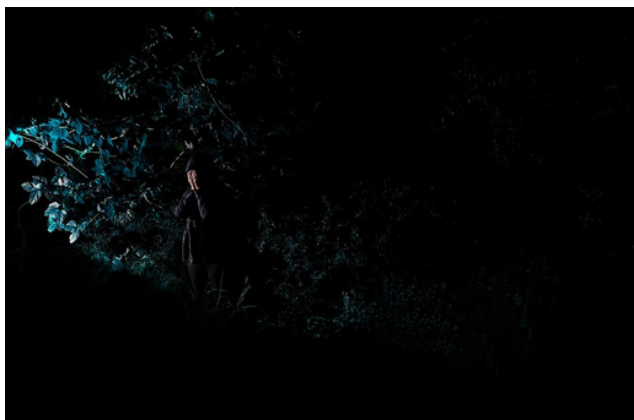


Backlights consist of ultra-slim LED light panels installed behind translucent prints. The system provides uniform, flicker-free illumination. Installation of works in various sizes.

37cm x 24,6 cm
£350



#2 45cm x 30cm
£500



#3 42cm x 28 cm
£380

FER ZANNOL

Photography
@ferzannol_ph



Backlights consist of ultra-slim LED light panels installed behind translucent prints. The system provides uniform, flicker-free illumination.

Installation of works in various sizes

#4 43 cm x 29 cm

£ 450



#5 42cm x 28 cm

£ 430



#6 42cm x 28 cm

£ 450

FER ZANNOL

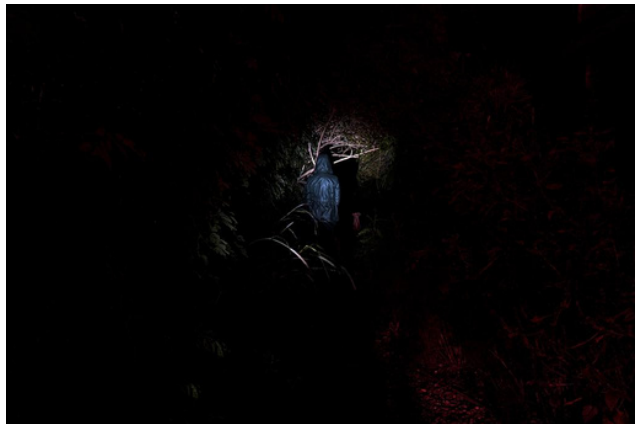
Photography
@ferzannol_ph



Backlights consist of ultra-slim LED light panels installed behind translucent prints. The system provides uniform, flicker-free illumination. Installation of works in various sizes

#6 37cm x 24 cm

£ 350



#7 58cm x 39cm

£ 750



FER ZANNOL



LATIN ART
Buenos Aires - Argentina